

Advancing brain and mental health research via global data sharing and governance



Franco Pestilli
Associate Professor
The University of Texas



Matthew Brown
Technology Lead
The Wellcome Trust



Damian Eke
Research Fellow
De Montfort University



THE
KAVLI
FOUNDATION



It takes a village

Mental health is a global problem.

Brain and mental health research are global enterprises.

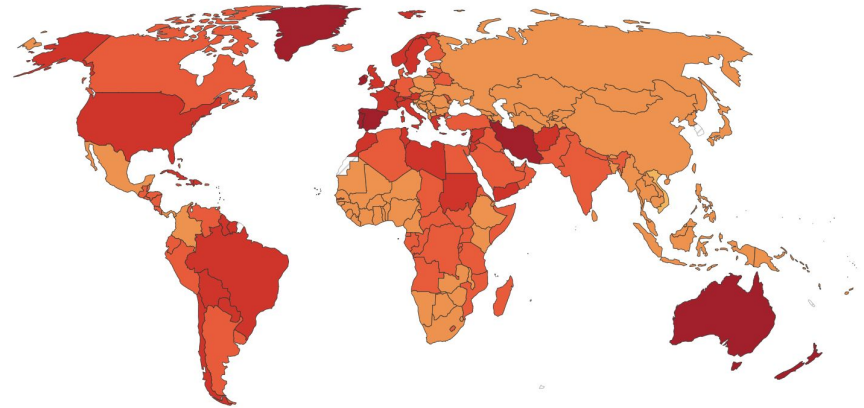
Their research requires sharing biological and behavioural measures across international cohorts to accelerate equitable development of treatments for all peoples.

Share of population with mental health disorders, 2019

Our World
in Data

Share of population with any mental health; this includes depression, anxiety, bipolar, eating disorders and schizophrenia. Due to the widespread under-diagnosis, these estimates use a combination of sources, including medical and national records, epidemiological data, survey data, and meta-regression models.

World



Source: IHME, Global Burden of Disease (2019)

OurWorldInData.org/mental-health • CC BY

1990 2019

CHART

MAP

TABLE

SOURCES

DOWNLOAD



The IBI Data Governance Task Force



View PDF

Download Full Issue

Neuron



Volume 110, Issue 4, 16 February 2022, Pages 600-612

Review

International data governance for neuroscience

Damian O. Eke^{1,2}, Amy Bernard³, Jan G. Bjaalie⁴, Ricardo Chavarriga⁵, Takashi Hanakawa⁶, Anthony J. Hannan⁷, Sean L. Hill⁸, Maryann E. Martone⁹, Agnes McMahon³, Oliver Ruebel¹⁰, Sharon Crook¹¹, Edda Thiels¹², Franco Pestilli¹³  

Show more 

+ Add to Mendeley  Share  Cite

<https://doi.org/10.1016/j.neuron.2021.11.017>

Under a Creative Commons license

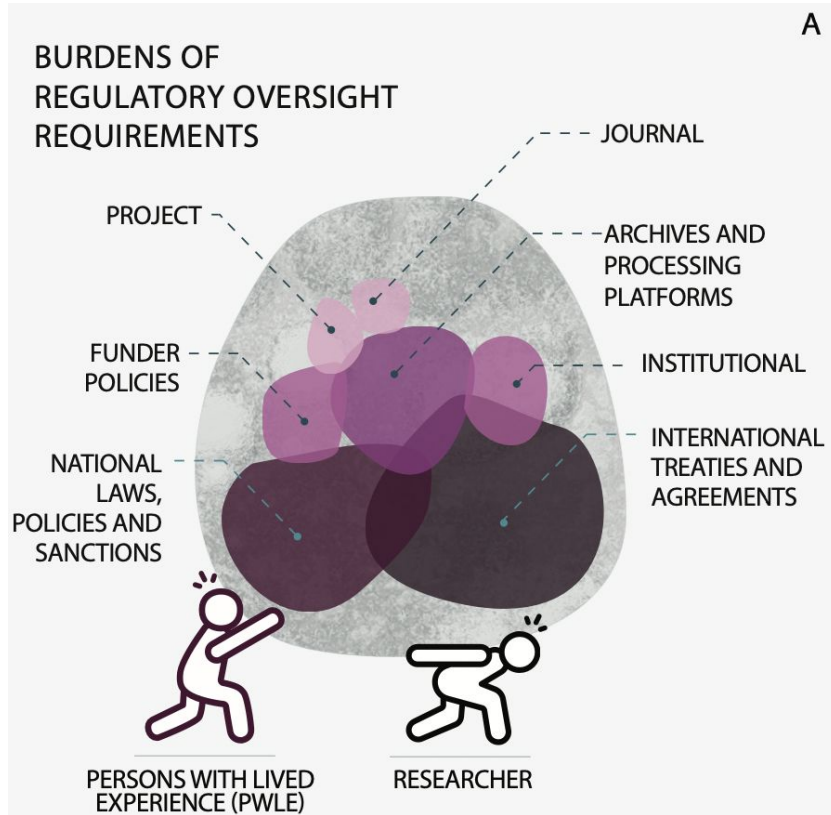
Get rights and content

 Open access

Recommendations

- Make IDG a priority
- Develop principles for IDG
- Develop practical tools and guidance for streamlined IDG
- Increase awareness and education on IDG





Lack of clarity on laws hinders data sharing

While brain and mental health research strives to become international, the lack of transparency and navigability of existing legal, ethical, and sociocultural guidance imposes barriers to data sharing.

Eke et al., 2021

[10.1016/j.neuron.2021.11.017](https://doi.org/10.1016/j.neuron.2021.11.017)

If done right, data governance can facilitate research

A robust brain and mental health International Data Governance Framework (IDGF) can turn heavy stones into stepping stones to accelerate research and discovery.



Eke et al., 2021

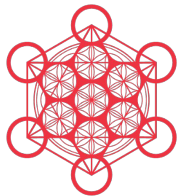
[10.1016/j.neuron.2021.11.017](https://doi.org/10.1016/j.neuron.2021.11.017)

The Kavli data governance pilot

Identify Bilateral Data Sharing Challenges (USA-AUS; EU-USA)

Develop Data Governance Documents around a specific technology.

Focus on EEG and MEG data



THE
KAVLI
FOUNDATION

brainlife

Free and secure reproducible neuroscience analysis platform.

Analyze your data on brainlife.io by either uploading or importing it from public archives. Over 400+ pre-processing Apps are available to build your custom workflows. Thousands of jobs can be submitted using shared clusters or on your own computer. Perform group-level statistical analysis or apply machine learning methods using Jupyter notebooks. Publish your full workflow from raw data to published figures in an integrated bundle with a single DOI

Portal

Hayashi, Caron et al., *in preparation*

The Wellcome Trust project

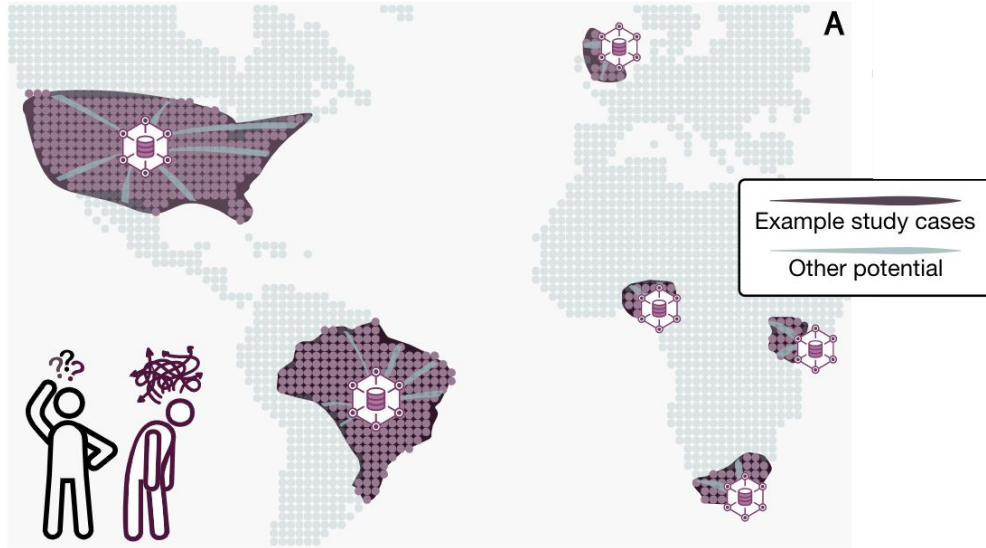
How can brain and mental health data be shared across national borders in a way that maximizes benefits to society and affected individuals while upholding laws and ethical principles?

Develop a **practical approach** for exploring current **challenges** to **responsible** international data **governance** along four dimensions: *technical*, *legal*, *lived-experience* and *ethical*.



Credit: Sebastian Mar / Wellcome Photography Prize 2020
Licence: Attribution, Non-Commercial CC BY-NC

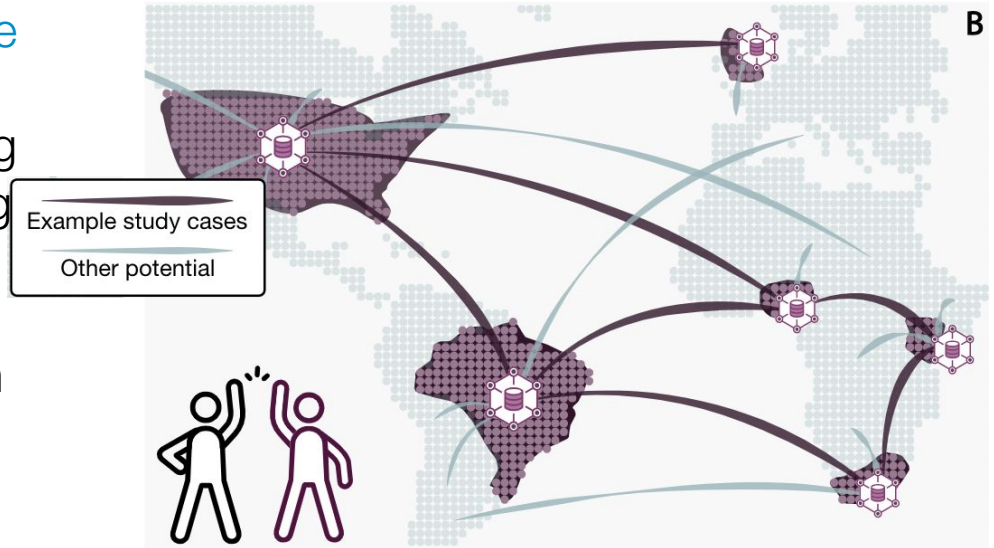
Data governance is defined nationally



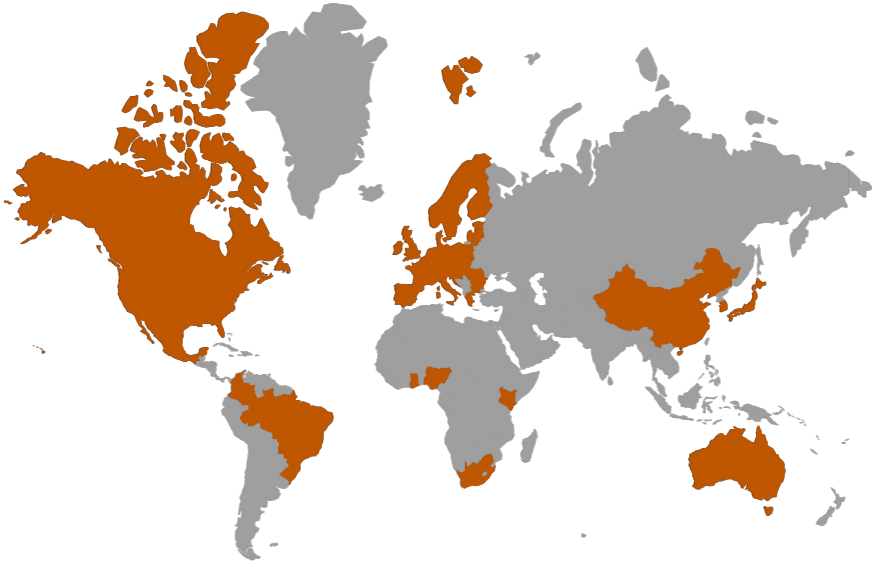
Access to data at an international scale can advance brain research by increasing the opportunities for **pooling data across cohorts**, **diversifying** the existing cohorts within a nation and achieving the **statistical power** necessary for **scientific rigor**.

Facilitatory international data governance

The **objective** is to create **responsible** and **sustainable governance** frameworks for data sharing, building toward our long-term goal of forming a sustainable **global consortium** to develop, **operate**, update and **disseminate** a robust brain and brain and mental health IDGF.



The Wellcome Trust project – Team



Franco Pestilli

The University of Texas USA

Damian Eke

De Montfort University UK

Thomas Nichols

Oxford University UK

Amadi Ihunwo

University of Witwatersrand South Africa

Ricardo Chavarriaga

Zurich University of Applied Sciences Switzerland

Fernanda Tovar Moll

D'OR Institute for Research and Education



pestilli@utexas.edu

We need you!

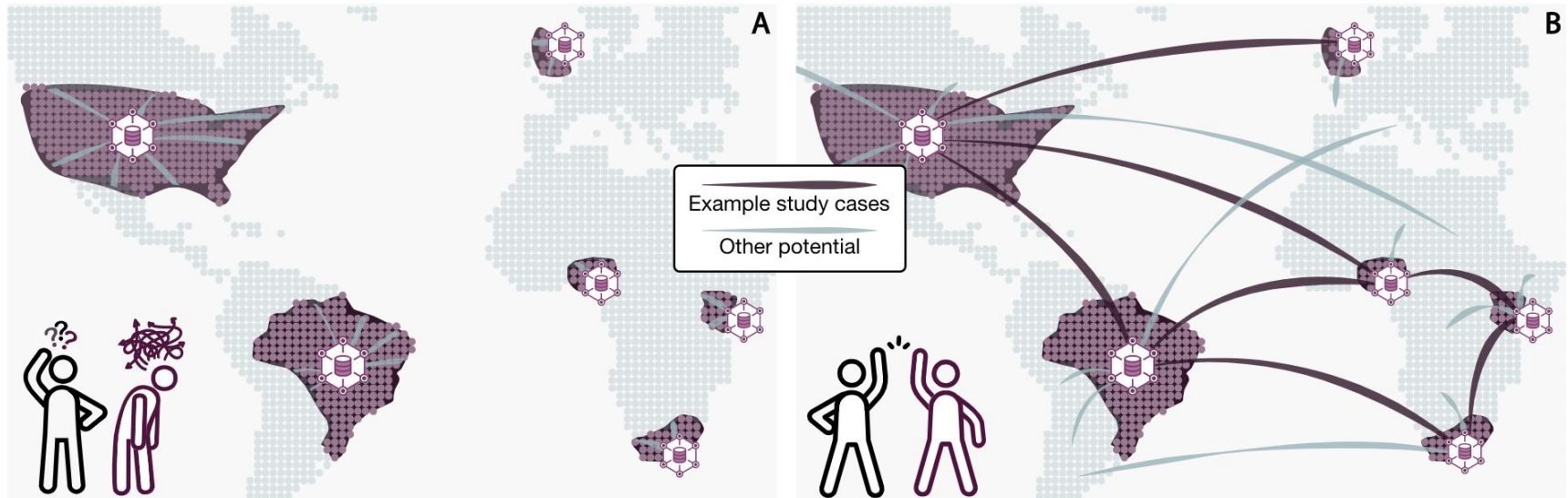
Ambassador program: Legal, Ethical, Technology, and Lived-Experience Ambassadors.

Organize a workshop: Help organize Workshops in high, medium and low income countries.

Become a consortium member: Help us form a sustainable global consortium to develop, operate and disseminate IDGF similar to GA4GH.org for genetic data.

Contribute data or expertise to the pathfinder projects.

This is an opportunity to build a responsible and sustainable data infrastructure.



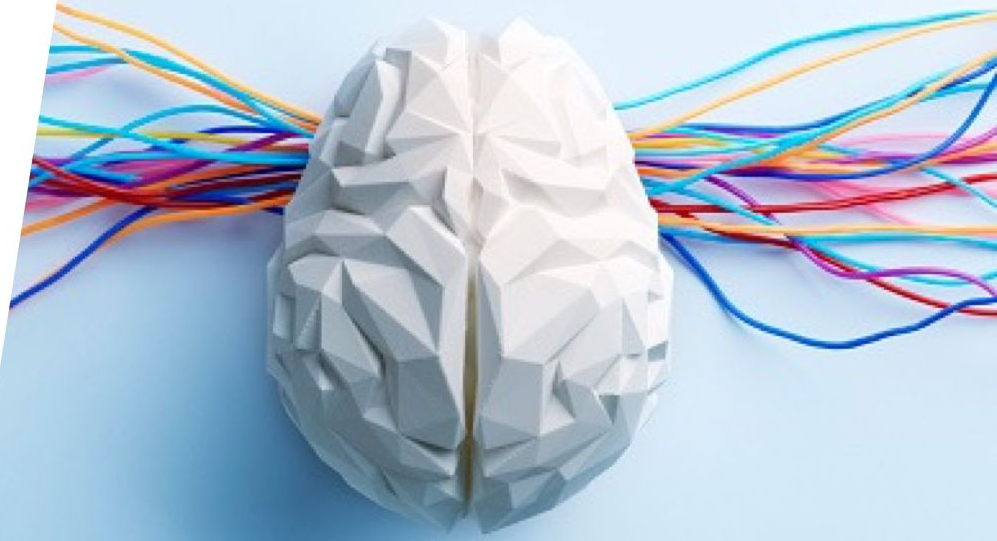


Wellcome's goal

To improve health by funding research, building global partnerships and running advocacy campaigns.

We work with people and organisations using science to solve the world's most **urgent health challenges.**

**Long term vision:
Neuroscience and
mental health data
can be shared across
groups and
geographies**



Ethical, legal and technical transparency can build trust and increase impact of neuroscience and mental health data

Image: Riccardo Annandale

Unsplash



**Help us build a
global
community to
lay the
foundations for
sharing
neuroscience
and mental
health data**



Image: Gianmarco

Unsplash

Advancing brain and mental health research via global data sharing and governance



Franco Pestilli
Associate Professor
The University of Texas

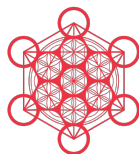


Matthew Brown
Technology Lead
The Wellcome Trust

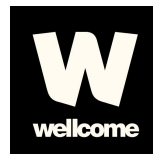


Damian Eke
Research Fellow
Montfort University

pestilli@utexas.edu

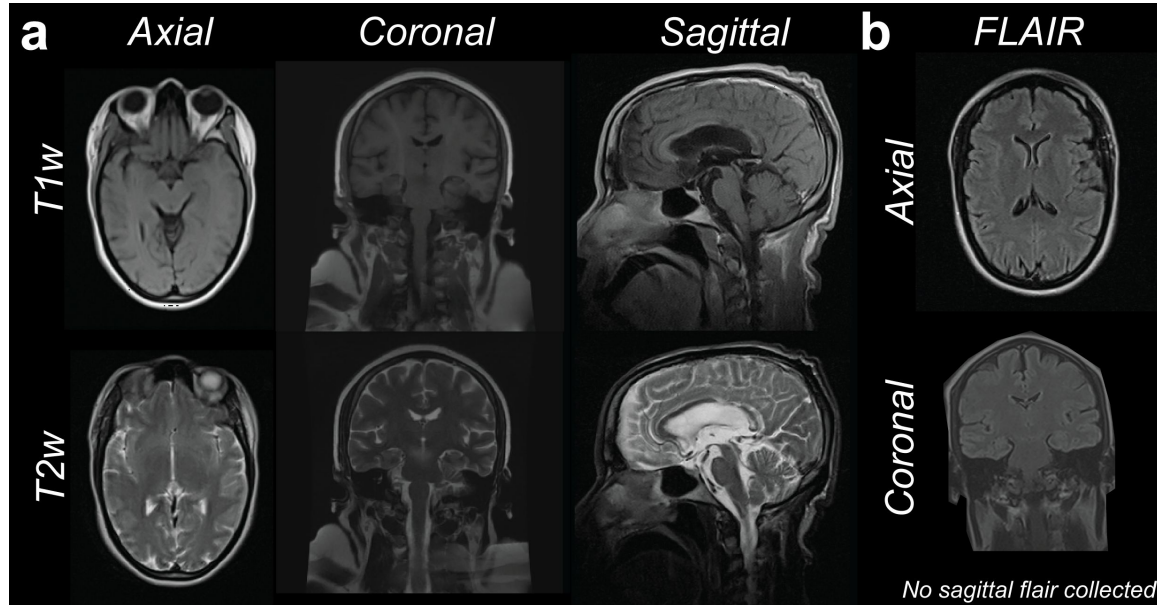
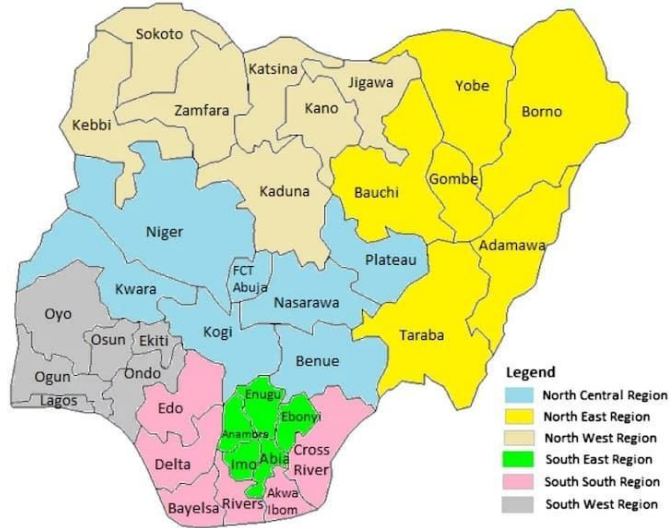


THE
KAVLI
FOUNDATION



Example pathfinder study

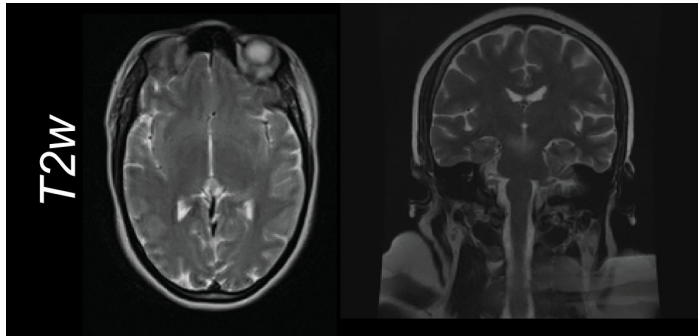
Dementia, Parkinson's Disease, Controls.



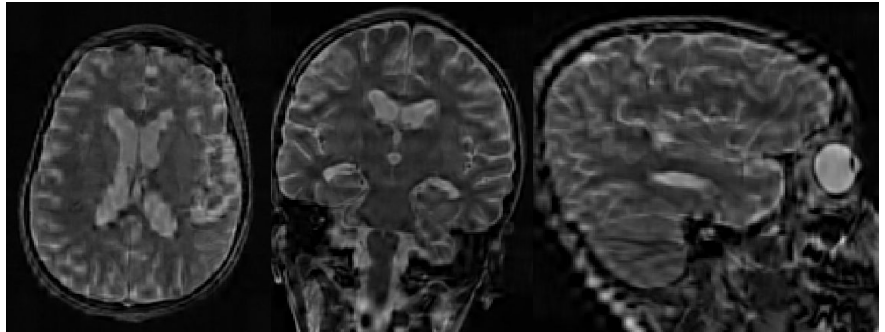
Wogu, Flim, Caron et al., *in preparation*

High-income country tool for MRI data processing

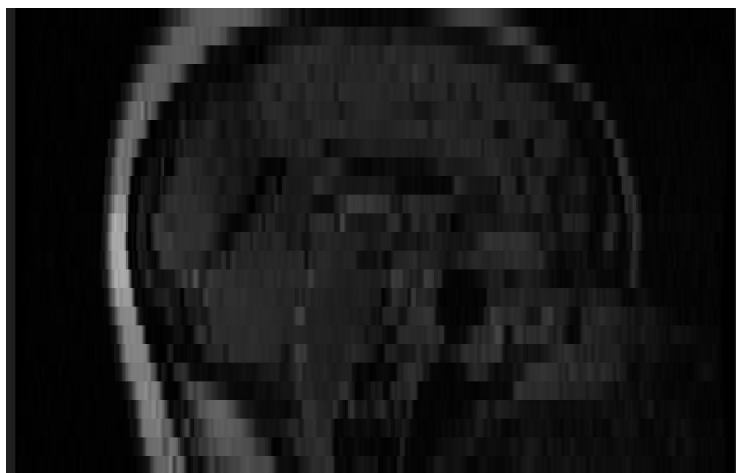
INPUT



OUTPUT

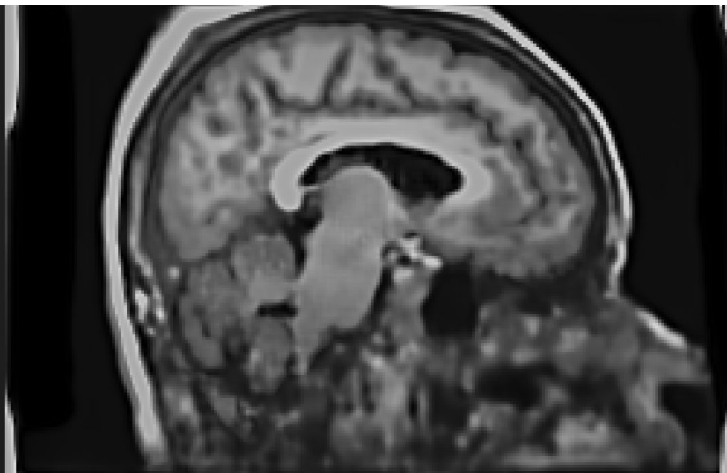


High-income country AI tool for MRI data synthesis



INPUT

Nigerian Clinical data



OUTPUT

(MP-RAGE)

Nigerian clinical data

Understanding brain and mental health

Mental health is a global problem.

The WHO has developed a special initiative on mental health.

Mental health conditions contribute to poor health outcomes, premature death, human rights violations, and global and national economic loss.

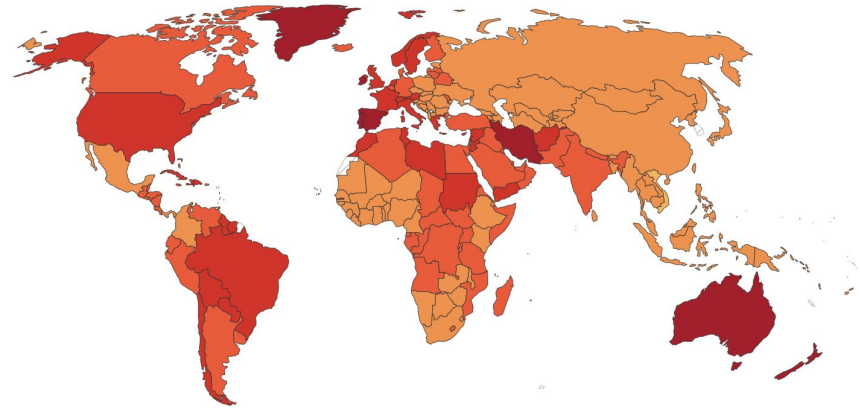
World Health Organization. (2019). The WHO special initiative for mental health (2019-2023): universal health coverage for mental health. World Health Organization.
<https://apps.who.int/iris/handle/10665/310981>.

Share of population with mental health disorders, 2019

Our World in Data

Share of population with any mental health; this includes depression, anxiety, bipolar, eating disorders and schizophrenia. Due to the widespread under-diagnosis, these estimates use a combination of sources, including medical and national records, epidemiological data, survey data, and meta-regression models.

World



Source: IHME, Global Burden of Disease (2019)

OurWorldInData.org/mental-health • CC BY

1990 2019

CHART

MAP

TABLE

SOURCES

DOWNLOAD



The Kavli data governance pilot

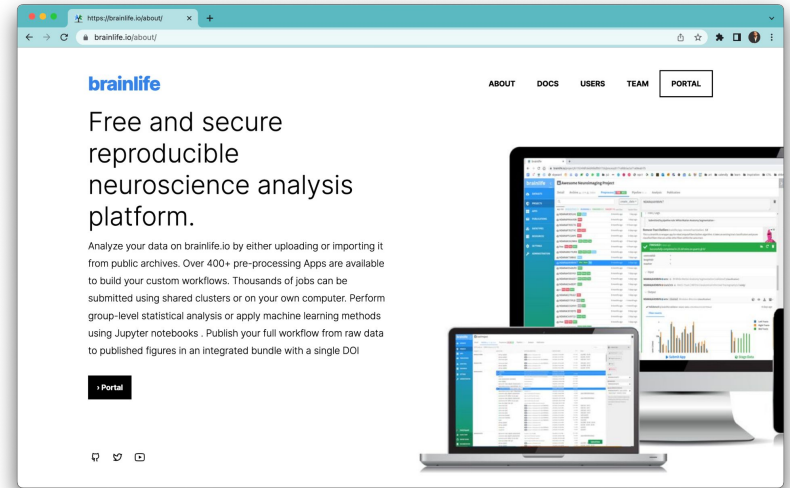
Analysis of laws and legislation that regulate the sharing of human data between the USA and France and the USA and Australia.

Interim results

- Data User Agreements that apply to USA-Australia
- Data Processing Agreement
- Data Deposition Consent Form
- Draft IDG Framework Proposal
- Modified brainlife.io use of cookies

What is next

- Analyze legislation between USA-EU-France
- Develop documents specific to USA-France
- Develop interface brainlife.io / France



The Wellcome Project – Advisory Board



Sebastian Mar / Wellcome Photography Prize

Amy Bernard

Bernd Stahl

Charlene Sunkel

Jack Van Horn

Paolo Maria Rossini

Pawel Swieboda

Maryann Martone

Stephen Smith

Terry Jernigan

Peter Goodhand

The Kavli Foundation

De Montfort University

Global Mental Health Peer Network

The University of Virginia

Università Sacro Cuore

EBRAINS

University of California San Diego

Oxford University

University of California, San Diego

Ontario Institute for Cancer Research

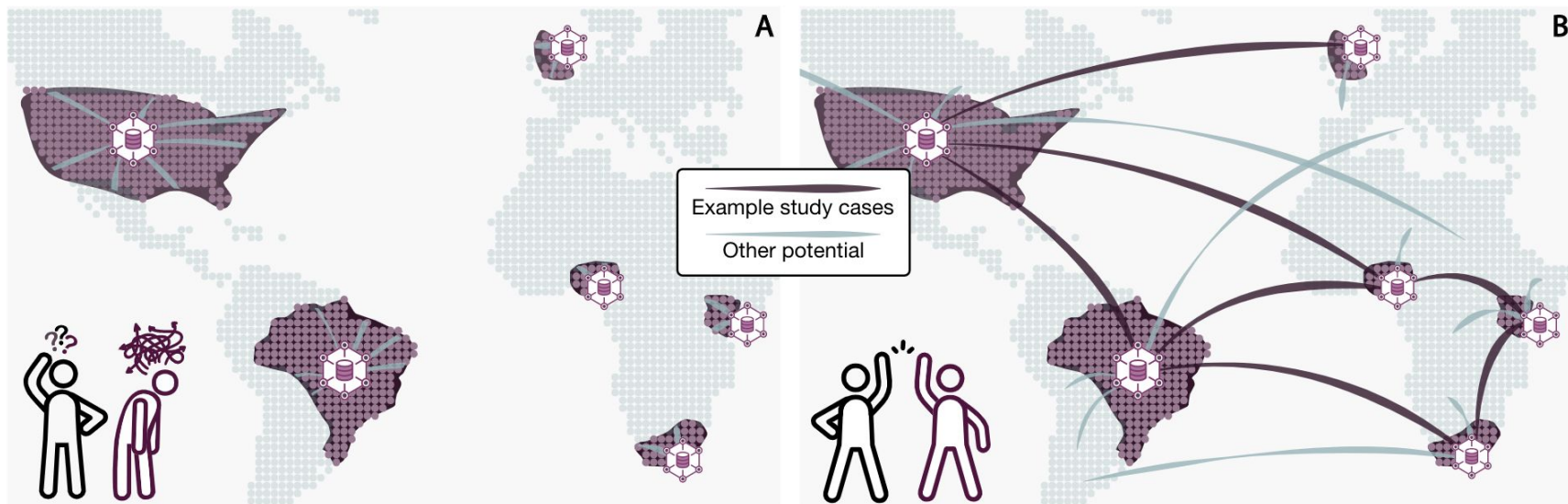


NIH, NSF, GA4GH, INCF, IEEE, OECD, SONA, Allen Institute, Kavli Foundation, NIH, OpenNeuro, EBRAINS, brainlife.io, CONP, GMGPN.org, APS, OECD, UNESCO, GESDA, OHBM

Data-driven research approach

Regional and global workshops to collect laws, ethical needs and cultural challenges.

Pathfinder case studies to test international data exchange using validation datasets.



**Increased data
diversity of
neuroscience
and mental
health studies is
a critical
component of
robust findings**

Image: NASA

Unsplash

